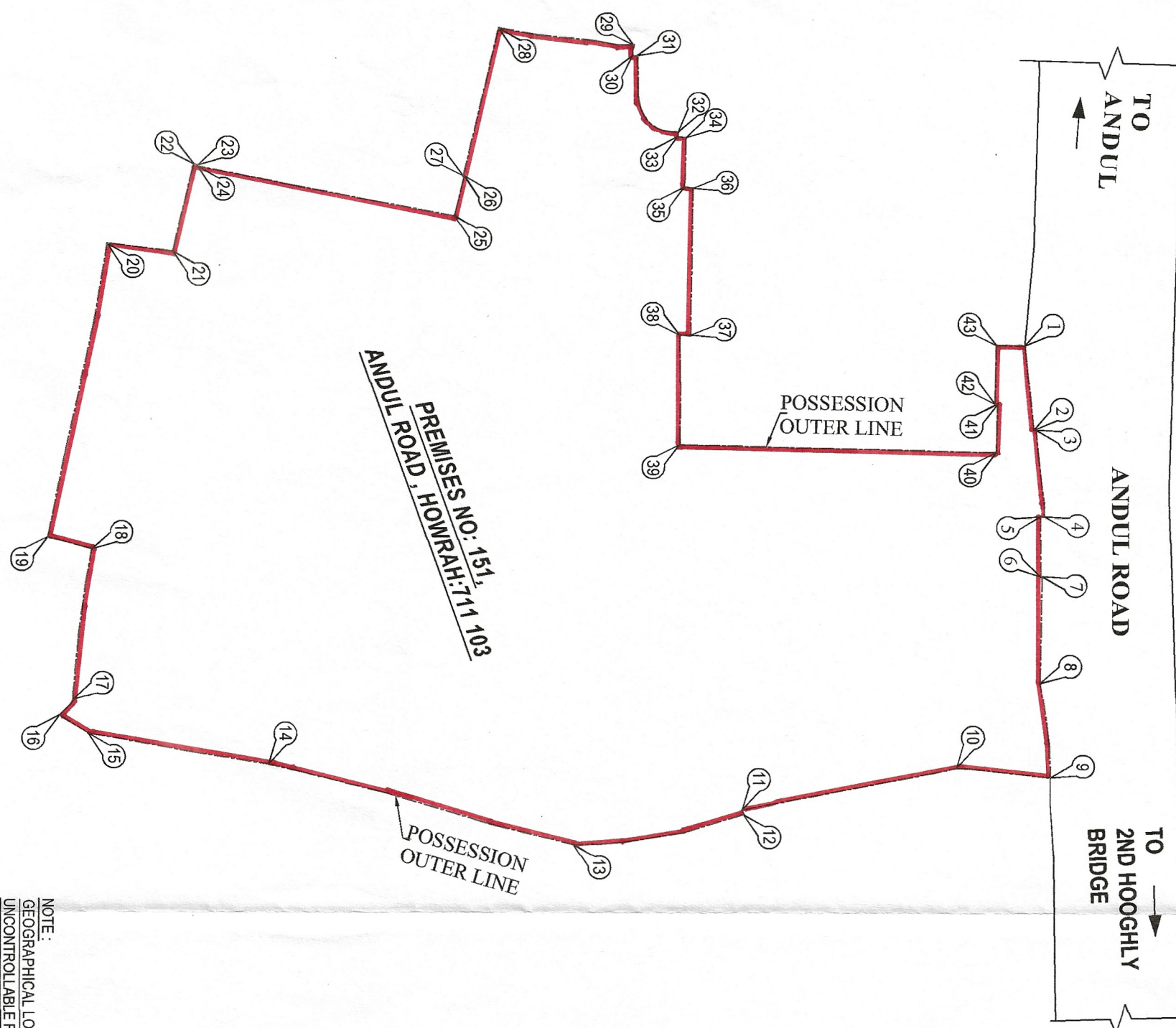


PORTION OF
NARAYANA HOSPITAL



NOTE:
GEOGRAPHICAL LOCATION DATA IS SUBJECT TO THE VARIABLE UNCONTROLLABLE FACTORS LIKE AVAILABILITY AND STRENGTH OF SATELLITE SIGNAL, WEATHER CONDITION AND CLOUDS, SHADOWS OF THE BUILDINGS AND EXISTING TREES ETC. AND SO THE SAID DATA MAY VARY MARGINALLY AS PER THE PREVALENT CONDITIONS OF THE SAID FACTORS.

Soumen Das Bairagi
Soumen Das Bairagi
 B.ARCH.,M.Co.A.,A.I.I.A.
 COA REGN. NO. CA/97/21249
 H.M.C. LBA No. 73

Krishnendu Chowdhury
Krishnendu Chowdhury
 L.B.S. CLASS-I No. 1301
KOLKATA MUNICIPAL CORPORATION

SIGNATURE OF THE L.B.S

"GEOGRAPHICAL LOCATION DATA IN WGS 84 SYSTEM " OF PREMISES NO-151, ANDUL ROAD, HOWRAH:711 103

S.No	Latitude	DMS	Longitude	DMS
1	22.561938	22° 33' 42.9768" N	88.307949	88° 18' 28.6164" E
2	22.561951	22° 33' 43.0236" N	88.308093	88° 18' 29.1348" E
3	22.561954	22° 33' 43.0344" N	88.308093	88° 18' 29.1348" E
4	22.561966	22° 33' 43.0776" N	88.308241	88° 18' 29.6676" E
5	22.561960	22° 33' 43.056" N	88.308241	88° 18' 29.6676" E
6	22.561960	22° 33' 43.056" N	88.308344	88° 18' 30.0384" E
7	22.561962	22° 33' 43.0632" N	88.308344	88° 18' 30.0384" E
8	22.561958	22° 33' 43.0488" N	88.308528	88° 18' 30.6936" E
9	22.561973	22° 33' 43.1028" N	88.308686	88° 18' 31.2696" E
10	22.561824	22° 33' 42.5664" N	88.308686	88° 18' 31.2048" E
11	22.561484	22° 33' 41.3424" N	88.308737	88° 18' 31.4532" E
12	22.561486	22° 33' 41.3496" N	88.308745	88° 18' 31.482" E
13	22.561216	22° 33' 40.3776" N	88.308794	88° 18' 31.6584" E
14	22.560735	22° 33' 38.646" N	88.308652	88° 18' 31.1472" E
15	22.560448	22° 33' 37.6128" N	88.308596	88° 18' 30.9528" E
16	22.560404	22° 33' 37.4544" N	88.308568	88° 18' 30.8448" E
17	22.560425	22° 33' 37.53" N	88.308542	88° 18' 30.7512" E
18	22.560457	22° 33' 37.6452" N	88.308294	88° 18' 29.8224" E
19	22.560388	22° 33' 37.3958" N	88.308263	88° 18' 29.7468" E
20	22.560484	22° 33' 37.7424" N	88.307762	88° 18' 27.9432" E
21	22.560588	22° 33' 38.1168" N	88.307776	88° 18' 27.9936" E
22	22.560623	22° 33' 38.2428" N	88.307626	88° 18' 27.4636" E
23	22.560629	22° 33' 38.2644" N	88.307628	88° 18' 27.4608" E
24	22.560629	22° 33' 38.2644" N	88.307631	88° 18' 27.4716" E
25	22.561035	22° 33' 39.726" N	88.307719	88° 18' 27.7884" E
26	22.561052	22° 33' 39.7872" N	88.307651	88° 18' 27.5436" E
27	22.561050	22° 33' 39.78" N	88.307650	88° 18' 27.54" E
28	22.561108	22° 33' 39.9888" N	88.307398	88° 18' 26.6328" E
29	22.561322	22° 33' 40.7592" N	88.307429	88° 18' 26.7444" E
30	22.561320	22° 33' 40.752" N	88.307447	88° 18' 26.8092" E
31	22.561328	22° 33' 40.7808" N	88.307447	88° 18' 26.8092" E
32	22.561391	22° 33' 41.0076" N	88.307579	88° 18' 27.2844" E
33	22.561390	22° 33' 41.004" N	88.307587	88° 18' 27.3132" E
34	22.561403	22° 33' 41.0608" N	88.307589	88° 18' 27.3204" E
35	22.561400	22° 33' 41.04" N	88.307673	88° 18' 27.6228" E
36	22.561413	22° 33' 41.0668" N	88.307675	88° 18' 27.63" E
37	22.561408	22° 33' 41.0688" N	88.307926	88° 18' 28.5336" E
38	22.561391	22° 33' 41.0076" N	88.307926	88° 18' 28.5336" E
39	22.561389	22° 33' 41.0004" N	88.308113	88° 18' 29.2068" E
40	22.561891	22° 33' 42.8076" N	88.308131	88° 18' 29.2716" E
41	22.561894	22° 33' 42.8184" N	88.308048	88° 18' 28.9728" E
42	22.561890	22° 33' 42.804" N	88.308048	88° 18' 28.9728" E
43	22.561893	22° 33' 42.8148" N	88.307948	88° 18' 28.6128" E

site: 151, ANDUL ROAD , SHIBPUR ,
WARD NO: 38 , HOWRAH: 711 103

SCALE = 1:900(M)

DRAWING NO:067/2019-20
DATE:17/07/2019

